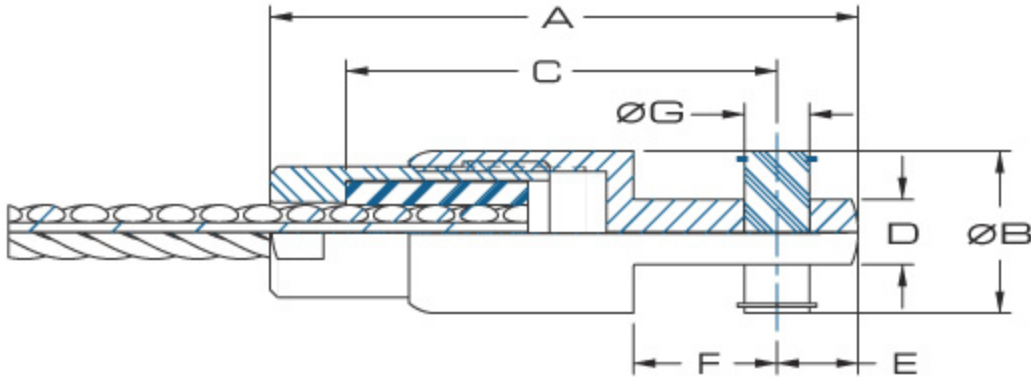


FT-300



Spade



STANDARD LENGTH									
P/N	SIZE	A	ØB	C	D	E	F	G	TRAVEL±
C-X-SSX-0250-S	1/4"	3.75	0.938	2.676	0.312	0.469	0.78	0.312	0.375
C-X-SSX-0312-S	5/16"	4.29	1.125	3.042	0.375	0.563	0.91	0.375	0.375
C-X-SSX-0375-S	3/8"	5.18	1.375	3.666	0.500	0.688	1.16	0.500	0.500
C-X-SSX-0500-S	1/2"	6.48	1.750	4.515	0.625	0.875	1.41	0.625	0.625
C-X-SSX-0625-S	5/8"	7.09	2.000	5.211	0.750	1.000	1.66	0.750	0.625
C-X-SSX-0750-S	3/4"	8.43	2.375	6.047	0.875	1.188	1.91	0.875	0.750
C-X-SSX-0875-S	7/8"	9.37	2.750	6.759	1.000	1.375	2.16	1.000	0.750
C-X-SSX-1000-S	1"	9.98	3.000	7.446	1.125	1.500	2.41	1.125	0.750

EXTENDED LENGTH									
P/N	SIZE	A	ØB	C	D	E	F	G	TRAVEL±
C-X-SEX-0250-S	1/4"	4.87	0.938	3.051	0.312	0.469	0.78	0.312	0.750
C-X-SEX-0312-S	5/16"	5.41	1.125	3.418	0.375	0.563	0.91	0.375	0.750
C-X-SEX-0375-S	3/8"	6.68	1.375	4.166	0.500	0.688	1.16	0.500	1.000
C-X-SEX-0500-S	1/2"	8.36	1.750	5.140	0.625	0.875	1.41	0.625	1.250
C-X-SEX-0625-S	5/8"	8.96	2.000	5.836	0.750	1.000	1.66	0.750	1.250
C-X-SEX-0750-S	3/4"	10.68	2.375	6.797	0.875	1.188	1.91	0.875	1.500
C-X-SEX-0875-S	7/8"	11.62	2.750	7.509	1.000	1.375	2.16	1.000	1.500
C-X-SEX-1000-S	1"	12.22	3.000	8.196	1.125	1.500	2.41	1.125	1.500



FRONTIER TECHNOLOGIES 
CUTTING EDGE MECHANICAL DESIGN