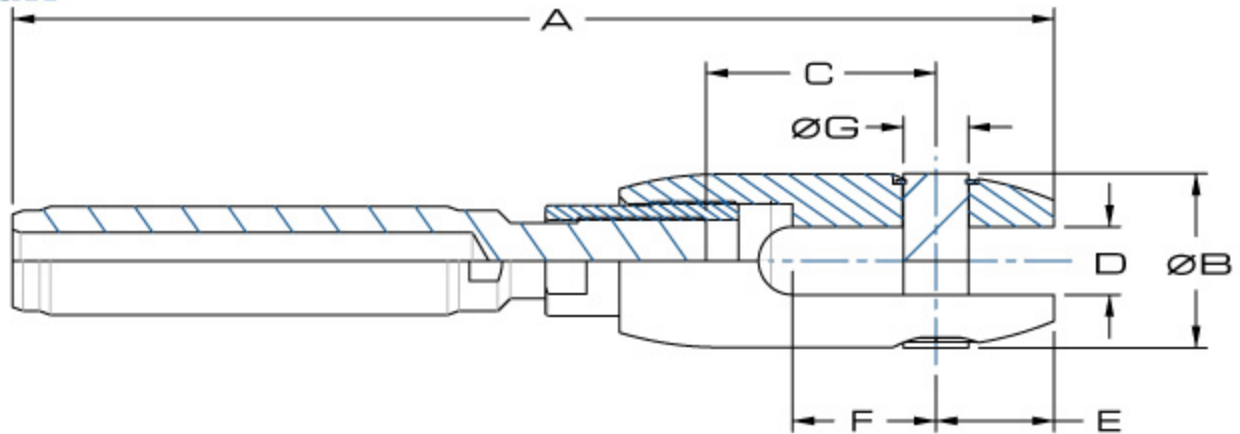


Clevis Jaw



STANDARD LENGTH									
P/N	SIZE	A	ØB	C	D	E	F	ØG	TRAVEL±
L-X-CSX-0250-S	1/4"	6.55	0.938	3.196	0.347	0.625	0.78	0.312	0.750
L-X-CSX-0312-S	5/16"	8.10	1.125	3.510	0.410	0.750	0.91	0.375	0.750
L-X-CSX-0375-S	3/8"	8.54	1.375	3.760	0.535	0.880	1.16	0.500	0.750
L-X-CSX-0500-S	1/2"	10.29	1.750	4.260	0.660	1.000	1.41	0.625	0.750
L-X-CSX-0625-S	5/8"	12.05	2.000	4.510	0.785	1.367	1.66	0.750	0.750
L-X-CSX-0750-S	3/4"	14.30	2.375	5.385	0.910	1.500	1.91	0.875	1.000
L-X-CSX-0875-S	7/8"	16.18	2.750	5.885	1.035	1.750	2.16	1.000	1.000
L-X-CSX-1000-S	1"	17.55	3.250	6.135	1.160	1.750	2.41	1.125	1.000
L-X-CSX-1250-S	1 1/4"	22.20	4.000	7.635	1.535	2.375	3.16	1.500	1.500

EXTENDED LENGTH									
P/N	SIZE	A	ØB	C	D	E	F	ØG	TRAVEL±
L-X-CEX-0250-S	1/4"	8.08	0.938	4.321	0.347	0.625	0.78	0.312	1.500
L-X-CEX-0312-S	5/16"	9.63	1.125	4.635	0.410	0.750	0.91	0.375	1.500
L-X-CEX-0375-S	3/8"	10.07	1.375	4.885	0.535	0.880	1.16	0.500	1.500
L-X-CEX-0500-S	1/2"	11.82	1.750	5.385	0.660	1.000	1.41	0.625	1.500
L-X-CEX-0625-S	5/8"	13.56	2.000	5.635	0.785	1.367	1.66	0.750	1.500
L-X-CEX-0750-S	3/4"	16.34	2.375	6.885	0.910	1.500	1.91	0.875	2.000
L-X-CEX-0875-S	7/8"	18.22	2.750	7.385	1.035	1.750	2.16	1.000	2.000
L-X-CEX-1000-S	1"	19.59	3.250	7.635	1.160	1.750	2.41	1.125	2.000
L-X-CEX-1250-S	1 1/4"	25.26	4.000	9.885	1.535	2.375	3.16	1.500	3.000